



## RESIDENTIAL GAS REPLACEMENT PARTS LIST

# Manufactured Home Direct Vent “RG2DVMH” Models



### Models Covered:

RG2DVMH30T\*(N,X)

RG2DVMH40T\*(N,X)

(\* ) Denotes Warranty Years

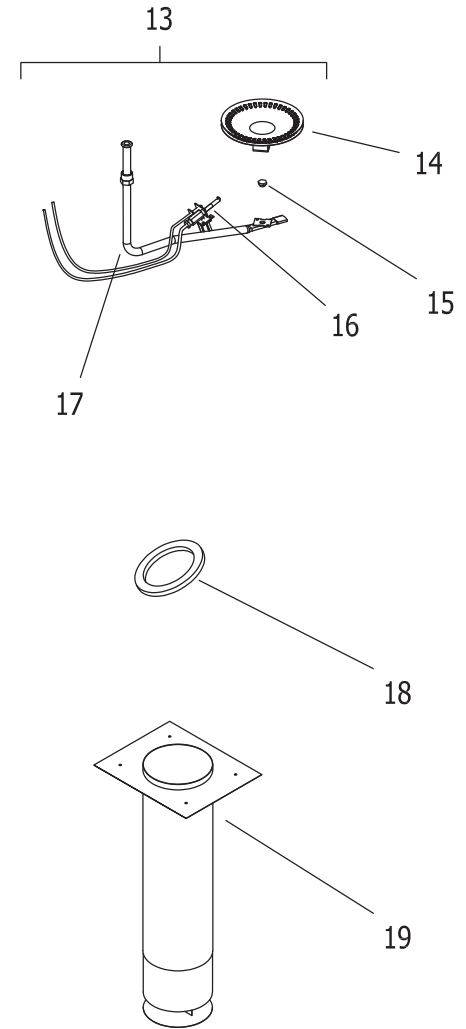
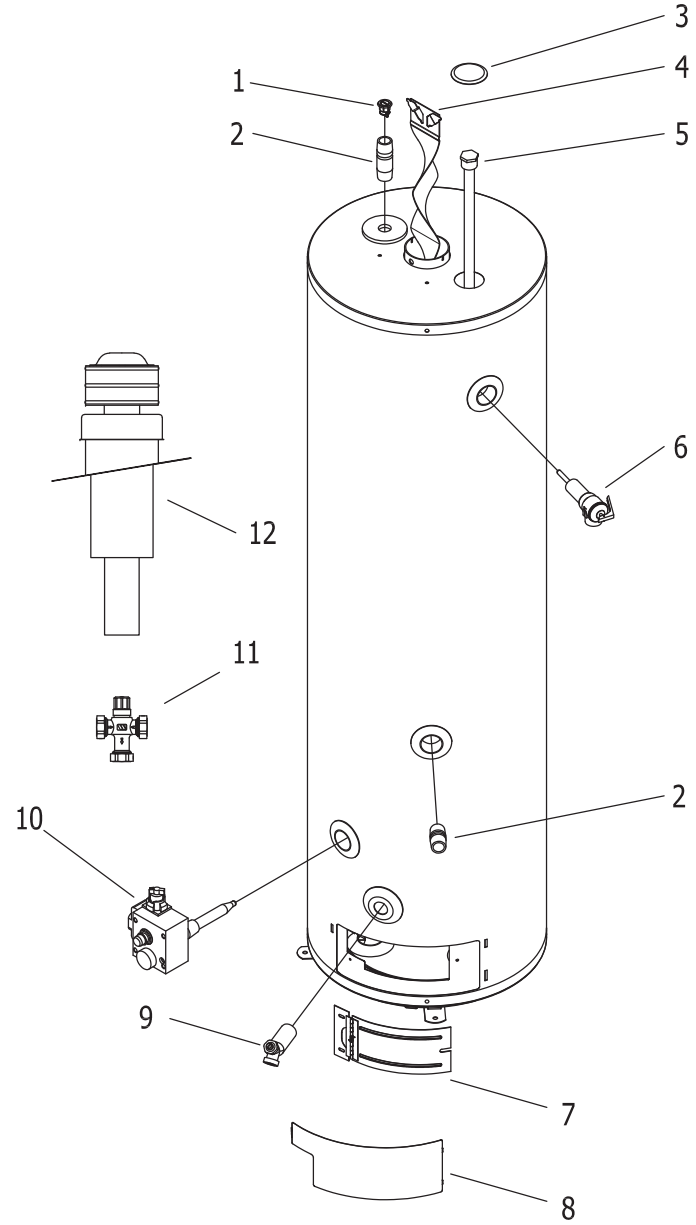
**Effective: August, 2020**  
**ECO 8255**

**NOTE: BOTH MODEL AND SERIAL  
NUMBERS ARE REQUIRED FOR  
ORDERING REPLACEMENT PARTS**

Dimensions and specifications  
subject to change without notice.



As required by the state of California Proposition 65.



Item	Description	Model	Model
		RG2DVMH30T*(N,X)	RG2DVMH40T*(N,X)
1	Heat Trap Insert (Outlet)	239-45167-00	239-45167-00
2	Nipple Outlet 3/4 NPT X 3	229-50053-03	229-50053-03
3	Hole Closure	239-31547-02	239-31547-02
4	Flue Baffle	243-37307-00	243-37307-00
5	Hex Anode (Magnesium) #	224-47782-08	224-47782-08
	Hex Anode (A420 Aluminum) #	224-49559-04	224-49559-04
6	T&P Valve	230-40594-02	230-40594-02
7	Inner Door Assembly	243-42658-00	243-42658-00
8	Outer Door	243-41061-00	243-41061-00
9	Brass Drain Valve	265-42351-02	265-42351-02
10	Nat. Gas Thermostat (W.R.)***	265-40595-03	265-40595-03
	L.P. Gas Thermostat (W.R.)***	265-40595-04	265-40595-04
11	ASSE Approved Mixing Valve (Optional)	239-51778-00	239-51778-00
12	Roof Jack 12" (Fixed)	415-37022-01	415-37022-01
	Roof Jack 18-32" (Adjustable)	415-37022-02	415-37022-02
	Roof Jack 32-60" (Adjustable)	415-37022-03	415-37022-03
	Roof Jack 48-95" (Adjustable)	415-37022-04	415-37022-04
13	Nat. Gas Burner Assembly Complete***	265-43980-02-40	265-43980-03-40
	LP Gas Burner Assembly Complete***	265-43981-02-52	265-43981-03-52
14	Gas Burner	228-41174-00	228-41174-00
15	Nat. Gas Main Burner Orifice 0 Ft. to 2,000 Ft.	234-37171-40	234-37171-40
	Nat. Gas High Altitude 2,001 Ft. to 7,000 Ft. (-475 model suffixes)	234-37171-43	234-37171-43
	LP Gas Main Burner Orifice 0 Ft. to 2,000 Ft.	234-37171-52	234-37171-52
	LP Gas High Altitude 2,001 Ft. to 7,000 Ft. (-475 model suffixes)	234-37171-53	234-37171-53
16	Nat. Gas Pilot Assembly	233-40248-05	233-40248-05
	LP Gas Pilot Assembly	233-40261-03	233-40261-03
17	Gas Feedline	233-41819-04	233-41819-05
	LP to Nat Gas Conversion Kit	243-36998-04	243-36998-04
	LP to Nat Gas Conversion Kit for 2,001 Ft. to 7,000 Ft. (-475 model suffixes)	243-36998-05	243-36998-06
	Nat to LP Gas Conversion Kit	243-36999-07	243-36999-07
	Nat to LP Gas Conversion Kit for 2,001 Ft. to 7,000 Ft. (-475 model suffixes)	243-36999-08	243-36999-09
18	Air Intake Kit Gasket	265-41135-00	265-41135-00
19	Telescoping Air Intake Kit	265-41142-00	265-41142-00

\* Applies to all warranties

\*\*\* Ordering a complete burner assembly may increase delivery time.  
Please order the specific component required for the quickest delivery.

# Anode may need to be cut to length

### **Reference Chart of Anode Length by Model**

Model	AOD Anode Cut Length (End to end)	
	Inches	Millimeters
RG2DVMH30T*(N,X)	32	813
RG2DVMH40T*(N,X)	40	1016



## United States

---

**Sales** 800-523-2931

**Technical Support** 800-334-3393

**Email** [techserv@bradfordwhite.com](mailto:techserv@bradfordwhite.com)

**Warranty** 800-531-2111

**Email** [warranty@bradfordwhite.com](mailto:warranty@bradfordwhite.com)

**Service Parts** 800-538-2020

**Email** [parts@bradfordwhite.com](mailto:parts@bradfordwhite.com)

## Canada

---

**Sales & Technical Support** 866-690-0961 905-203-0600

**Fax** 905-636-0666

**Warranty** [bwccwarranty@bradfordwhite.com](mailto:bwccwarranty@bradfordwhite.com)

**Technical Support** [bwccotech@bradfordwhite.com](mailto:bwccotech@bradfordwhite.com)

**Service Parts** [orders@bradfordwhitecanada.com](mailto:orders@bradfordwhitecanada.com)

**Orders** [ca.orders@bradfordwhite.com](mailto:ca.orders@bradfordwhite.com)

For U.S. and Canada field service,  
contact your professional installer or  
local Bradford White sales representative.

## International

---

**General Contact** [international@bradfordwhite.com](mailto:international@bradfordwhite.com)