



INFINITI[®] SERIES

Indoor, Outdoor, and Built-in Recirculation

FEATURING **STEADISET[®]** TECHNOLOGY

The Smarter Way to Go Tankless


BRADFORD WHITE[®]
WATER HEATERS

NOW THERE'S A SMARTER WAY TO GO TANKLESS.

INTRODUCING THE **INFINITI®** SERIES.

INFINITI® K SERIES FOR ENDLESS HOT WATER DELIVERY AND THE **INFINITI® L** FOR EVEN FASTER HOT WATER DELIVERY WITH BUILT-IN RECIRCULATION PUMP

- ENERGY STAR® Qualified - UEF up to .95
- Environmentally friendly Ultra Low NOx combustion burner
- Built-in pump for recirculation with preprogrammed options (Infiniti® L only)
- Low flow hot water supply with 22:1 turn down ratio
- Venting flexibility of 2" up to 60ft. or 3" up to 280ft. for utilizing the existing vent
- Cascade up to 24 units (Infiniti® K Series only)

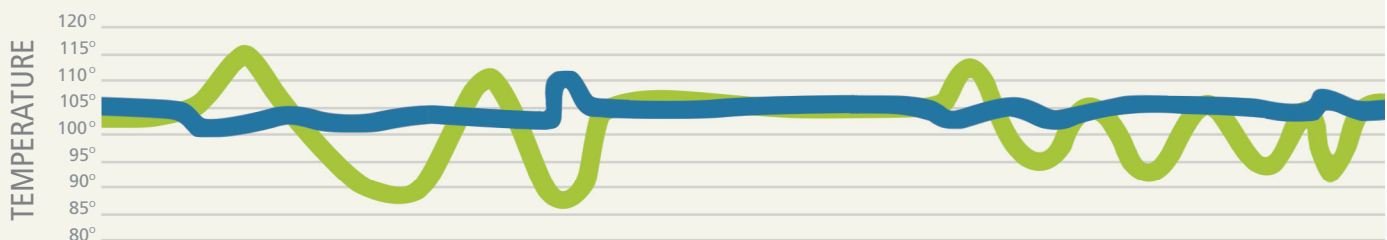


HOW STEADISET® TECHNOLOGY WORKS:

TEMPERATURE STAYS CONSISTENT - MORE EFFICIENTLY THAN EVER BEFORE!

No internal buffer tank needed

Temperature Variation Comparison | Infiniti® K Tankless Series vs. conventional tankless with integrated buffer tank



■ Infiniti® K Tankless Series ■ Conventional Tankless

* Temperature Spike Overshoot/Undershoot Comparison Infiniti® K Tankless Series vs. conventional tankless with integrated buffer tank with varying hot water draw patterns (0 - 5 GPM), based on an inlet water temperature of 65° F.

THE **INFINITI®** SERIES DOMINATES WITH BEST-IN-CLASS PERFORMANCE.

INFINITI® SERIES INDOOR MODELS



- 1) SELF-CALIBRATING FAN AND GAS VALVE** Simple combustion management system uses self-calibrating sensors to automatically configure air fuel ratio for flue length, gas type, and altitude - without a combustion analyzer
- 2) BUILT-IN DIGITAL CONTROL** Temperature can be adjusted on the front control panel and pre-programmed recirculation schedule can be set
- 3) TOP WATER CONNECTIONS** reduces time and materials, and makes retrofit replacements easy
- 4) ACTIVE BYPASS** achieves superior temperature stability ($\pm 2^{\circ}\text{F}$) ($\pm 1^{\circ}\text{C}$)
- 5) INLET WATER FILTER** external access for easy maintenance
- 6) PRESSURE RELIEF VALVE** included with integral port
- 7) FIELD GAS CONVERSION** (LP conversion kit included)
- 8) INTEGRATED FLUSHING PORTS** for easier maintenance
- 9) BUILT-IN PUMP** (Infiniti® L only)

THE INFINITI® SERIES SMART ENGINEERING MEANS AN EASY INSTALLATION, SMOOTH OPERATION, AND FEWER CALLBACKS.

INFINITI® K SERIES OUTDOOR MODELS

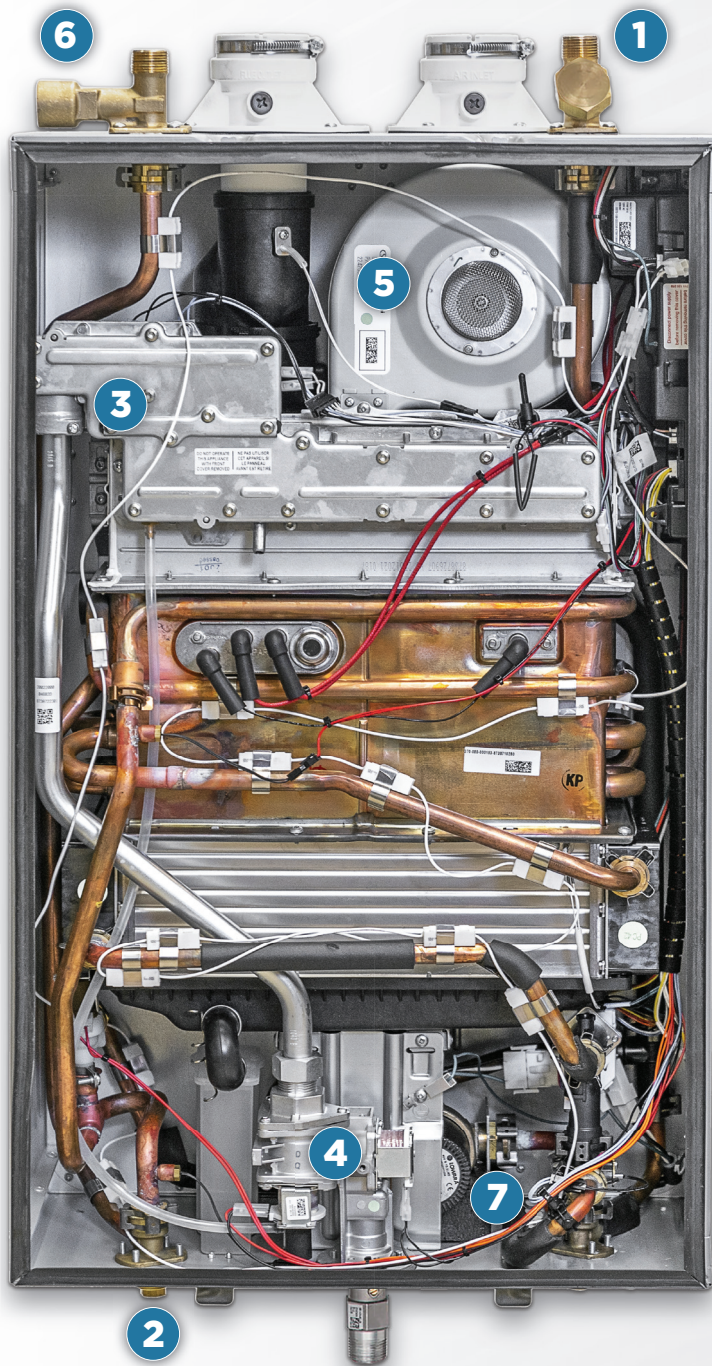


- 1) **Self-Calibrating Fan and Gas Valve** simple combustion management system
- 2) **Remote Digital Control** (100-140°F) (38°C-60°C)
- 3) **Active Bypass** Achieves superior temperature stability ($\pm 2^{\circ}\text{F}$) ($\pm 1^{\circ}\text{C}$)
- 4) **External Recirculation Pump Wiring** installed
- 5) **Inlet Water Filter** External access for easy maintenance
- 6) **Built In Freeze Protection** activates automatically when the water heater is plugged in
- 7) **Flushing condensate trap**
- 8) **Intelligent Cascading Kit** (optional)



THE INFINITI® SERIES SMART DESIGN GIVES YOU ROOM TO WORK!

INFINITI® SERIES INDOOR MODELS



SMART ENGINEERING MEANS AN EASY INSTALLATION, SMOOTH OPERATION, AND FEWER CALLBACKS.

- 1) **TOP WATER CONNECTIONS** for time and cost saving installation
- 2) **INTEGRATED FLUSHING PORTS** for easier maintenance
- 3) **FIELD GAS CONVERSION** (LP conversion kit included)
- 4) **SELF-CALIBRATING GAS VALVE** for time saving installation
- 5) **QUIET** self-compensating high-capacity blower
- 6) **INCLUDED PRV** and Integral installation port
- 7) **BUILT-IN PUMP** (Infiniti® L only)



EASY ACCESS top water connections

INFINITI® SERIES
QUALITY BUILT TO PLEASE BOTH
YOU AND YOUR CUSTOMERS.



THE INFINITI® SERIES

SPECS AT A GLANCE

Model	Nat. MBTU/Hr. Input	LP MBTU/Hr. Input	Uniform Energy Factor	Temp. Range	Min. Water Flow	GPM @ Temp. Rise		
						45°F	75°F	90°F
RTG-K-160-N1*	9-160 MBTU/Hr.	17-160 MBTU/Hr.	0.95	100-140°F	0.45 gpm	7.0	4.2	3.5
RTG-K-160-N2*	9-160 MBTU/Hr.	17-160 MBTU/Hr.	0.95	100-140°F	0.45 gpm	7.0	4.2	3.5
RTG-K-199-N1	9-199 MBTU/Hr.	17-199 MBTU/Hr.	0.95	100-140°F	0.45 gpm	8.7	5.2	4.4
RTG-K-199-N2	9-199 MBTU/Hr.	17-199 MBTU/Hr.	0.95	100-140°F	0.45 gpm	8.7	5.2	4.4
RTG-L-199-N1*	9-199 MBTU/Hr.	17-199 MBTU/Hr.	0.95	100-140°F	0.45 gpm	8.7	5.2	4.4

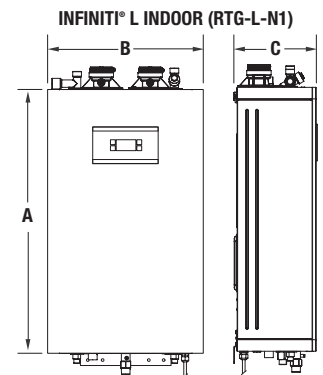
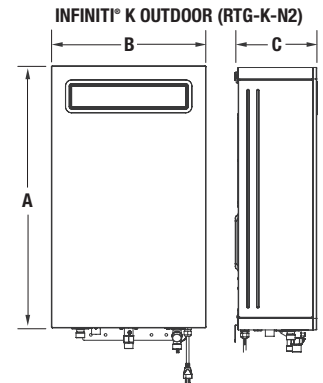
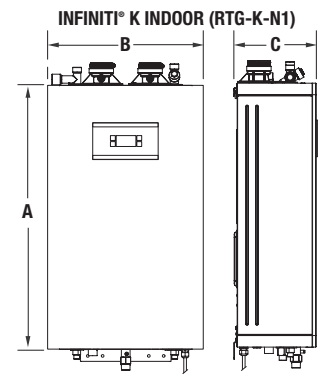
Model	Installation	A Height in.	B Width in.	C Depth in.	Water Line in.	Main Voltage
RTG-K-160-N1*	Indoor	31½	18 ¹⁹ / ₃₂	9 ²⁷ / ₃₂	NPT 3/4"	120 VAC 60Hz
RTG-K-160-N2*	Outdoor	31½	18 ¹⁹ / ₃₂	9 ²⁷ / ₃₂	NPT 3/4"	120 VAC 60Hz
RTG-K-199-N1	Indoor	31½	18 ¹⁹ / ₃₂	9 ²⁷ / ₃₂	NPT 3/4"	120 VAC 60Hz
RTG-K-199-N2	Outdoor	31½	18 ¹⁹ / ₃₂	9 ²⁷ / ₃₂	NPT 3/4"	120 VAC 60Hz
RTG-L-199-N1*	Indoor	31½	18 ¹⁹ / ₃₂	9 ²⁷ / ₃₂	NPT 3/4"	120 VAC 60Hz

* Suffix "1" denotes indoor model and can vent with 2" or 3" PVC, CPVC or polypropylene venting materials.
 Suffix "2" denotes outdoor model.

For full inspections, please refer to www.bradfordwhite.com/infinityseries

2" (51mm.) Venting	Maximum allowable exhaust vent length	Maximum allowable intake vent length	Combined maximum allowable vent	3" (76mm.) Venting	Maximum allowable exhaust vent length	Maximum allowable intake vent length	Combined maximum allowable vent
Twin Pipe	60 ft. 18m	60 ft. 18m	120 ft. 37m	Twin Pipe	280 ft. 85m	280 ft. 85m	560 ft. 171m

Dimensions and specifications subject to change without notice in accordance with our policy of continuous product improvement.



Infiniti
TANKLESS®
The Smarter Way to Go Tankless

BRADFORD WHITE®
WATER HEATERS

www.bradfordwhite.com/infinityseries